



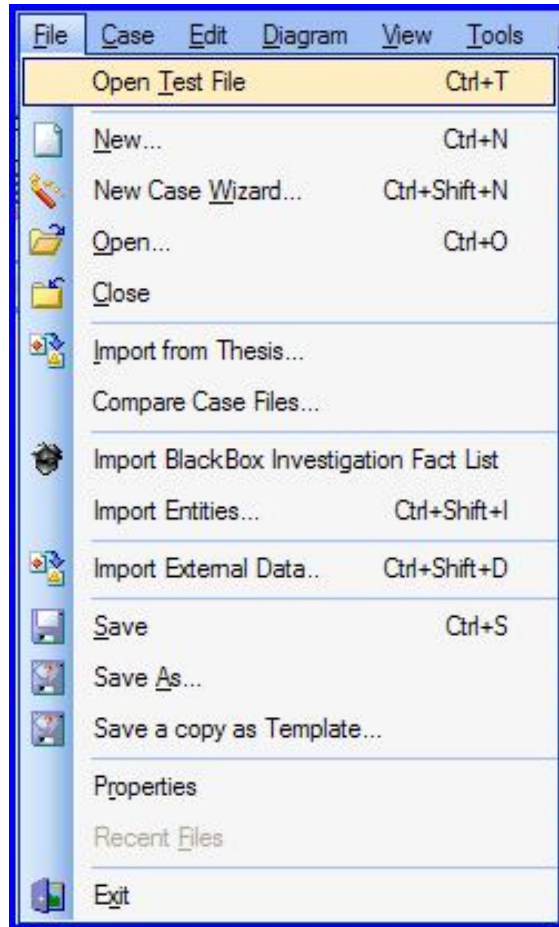
Getting started in BowTieXP.

Congratulations – you found us. Now you are going to find out how easy BowTieXP is to use.

Firstly we will show you how to open the inbuilt Test file, use the Treeview, then set up the display options.

Next we will show you how to build you own diagram, and add information to the diagram elements . Then you are on your way.

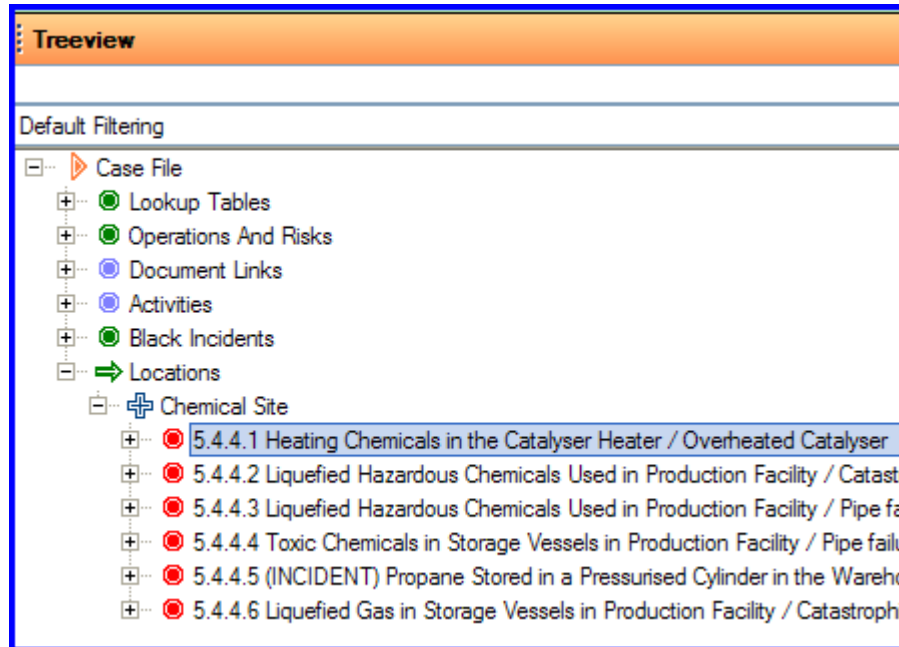
Opening up the Test file



The inbuilt Test File has some example diagrams to show you how one person has used BowTieXP to model their risks.

You might have chosen a different way to model them – but the example is only there to show you how the software elements combine to produce a credible risk assessment scenario.

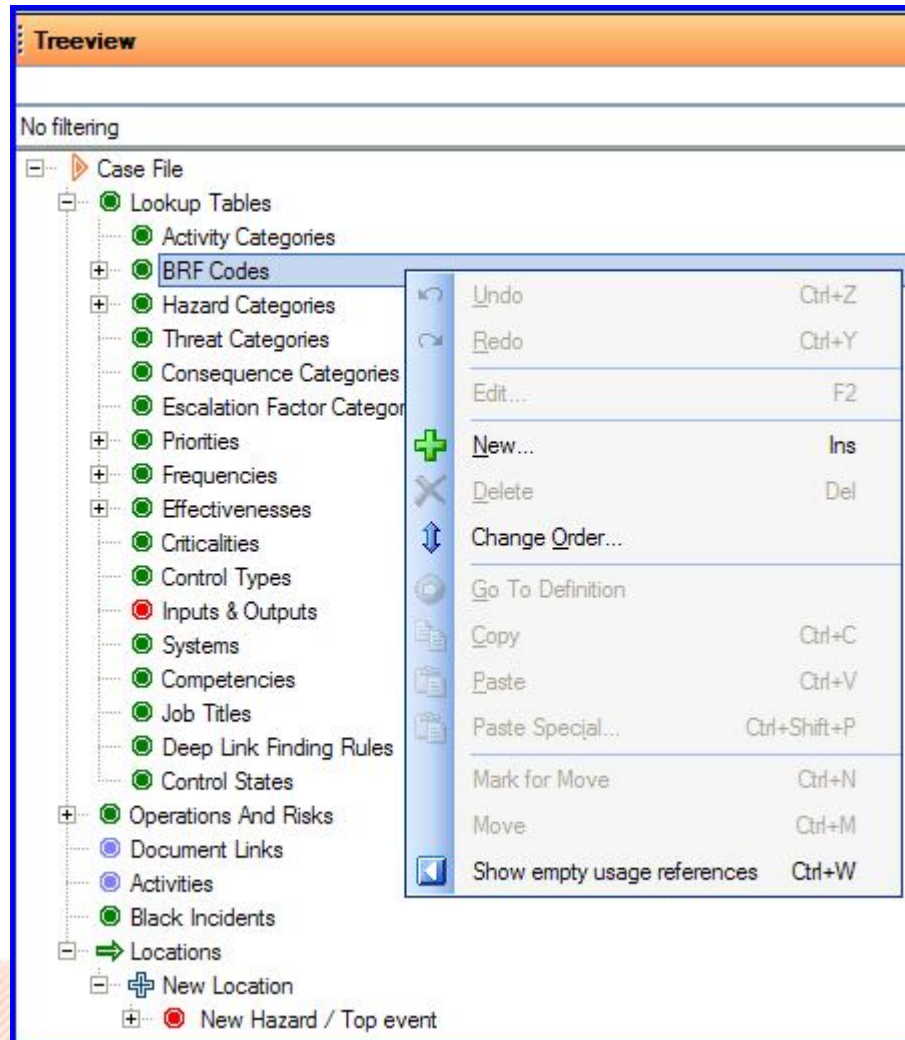
Opening a Hazard from the Treeview



At the bottom of the **Treeview** you will see a container called “Locations”, which includes the “Chemical Site” location, and six diagrams – called “Hazards” – which you can view by double clicking each one.

Before you move on – write down this command in case you close a window and need to restore the default layout: **SHIFT F12**.

Using the Treeview



The **Treeview** is your main repository for reference data – lists of Job Titles, and your scales for Effectiveness, Control Types (Hierarchy of Controls), Criticality, etc.

These are under the “Lookup Tables” section of the Treeview. You can right click on any ‘container’ and add a new item at almost any time.

Zooming and Expand / Collapse

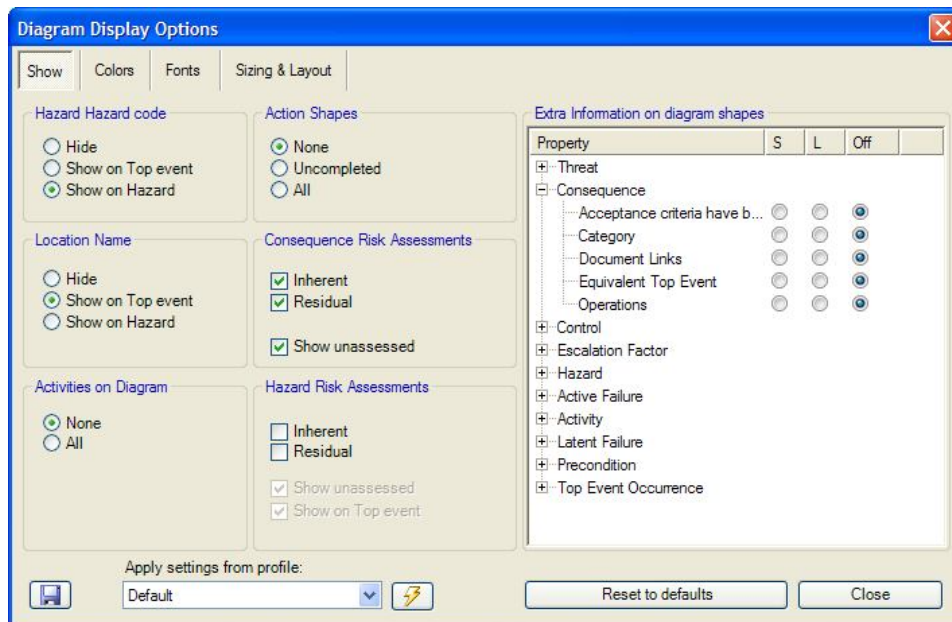


Did you know that if you hold your CTL button and scroll your mouse wheel, you can zoom in or out on many programs – Internet Explorer, MS Word, Excel, PowerPoint, etc. ?

You can also use that in BowTieXP – as well as many typical computer commands.

Also try clicking on the icons at top left of the diagram – pictured here on the slide.

Setting up Display options

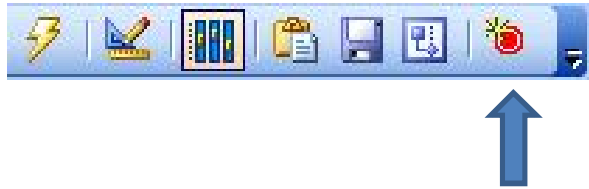


With so much data able to be stored in your diagram, you need to be able to control what is displayed. The icon here at top left opens your display options toolbox.

Each tab ('Show', 'Colors', 'Fonts', 'Sizing and Layout') has a set of options. 'S' & 'L' on RHS mean Short & Long.

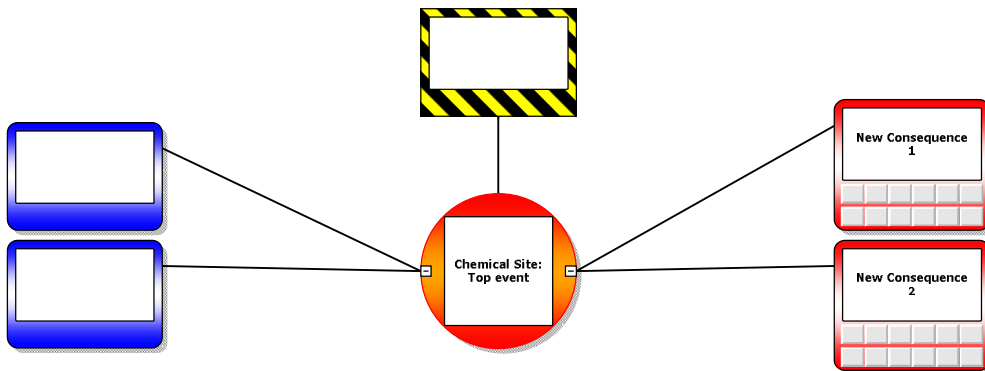
If you move this window to the side you can see the diagram change as you select options.

The Diagram Wizard



When you want to build your own diagram, an easy way is to click the Wizard icon, as shown. You will see it created in the Treeview, under a Location.

To change an element, just double click it, and the Editor window will appear. Make your changes and click "Commit".



Adding elements to the diagram



When you want to add elements to the diagram, you can either right click on it and choose “Add”, or click on one of the icons shown at left. The icons are activated when you click on a ‘parent’ element – e.g. to add a Threat, you need to click on the Top Event.

Adding Attributes to the elements

Code:

Name: Separation of Tank from catalyser and propane cylinders by wal

Description: [\(edit in popup\)](#)

Control type: Separation (Time or Space)

Effectiveness: Separation (Time or Space)
Reduction in Inventory
Control of Energy Release
Administrative

Brf code: Procedural
Maintenance
Inspection
Safety

Acceptance criteria have been met

View Criteria...

OK Cancel

When you want to add elements to the diagram, you can choose them from the Editor, or just drag the property from the Treeview (e.g. drag “Administration” from the Control Types onto a Control.)

Now go and try it.

Code:

Name: Separation of Tank from catalyser and propane cylinders by wal

Description:
[\(edit in popup\)](#)

Control type: Separation (Time or Space)

Effectiveness: Separation (Time or Space)

Accountable: Separation (Time or Space)
Reduction in Inventory
Control of Energy Release
Administrative

Brf code: Procedural
Maintenance

Criticality: Inspection
Safety

Acceptance criteria have been met

View Criteria...

OK Cancel

That's about all we need to cover for the moment. You can download a full manual, but training in the BowTie methodology is more important than the software. We can offer training, and public courses are listed on our 'cgerisk.com' or 'www.bowtiexp.com.au' website.

Enjoy the software, and please feel free to discuss your needs with us.

HSE and Risk Management services

HSEQ Compliance

- § Audits and assessments

HSEQ Systems Development

- § HSE manual and safety management systems development
- § Crisis Management planning and training
- § Emergency Response & contingency planning
- § HSE Bridging Document development

Risk Management

- § Safety Case preparation and development
- § HAZOP and HAZID workshops & leadership
- § SIL, LOPA, FMECA, QRA
- § Process safety and risk engineering
- § Fire and explosion analysis, EERA, ESSA
- § Safety and Risk management systems
- § BowTieXP risk analysis software, consultancy and training

Incident Investigation

- § Major and minor investigations

Training

- § Safety training programs & RTO courses
- § Software training

Software

- § BowTieXP Risk Analysis
- § Electronic Permit to Work (Permit Vision)
- § Shift Handover (Shift Vision)
- § Container Vision
- § Viewport (Safety case documentation)
- § Compliance
- § Enterprise risk management
- § Incident investigation
 - § Black Box
 - § Investigator 3

HSE support personnel

Other Software Products and Services

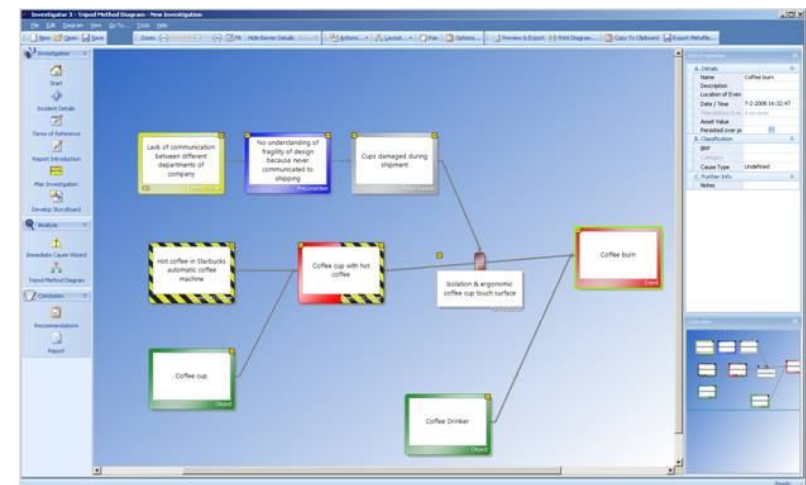
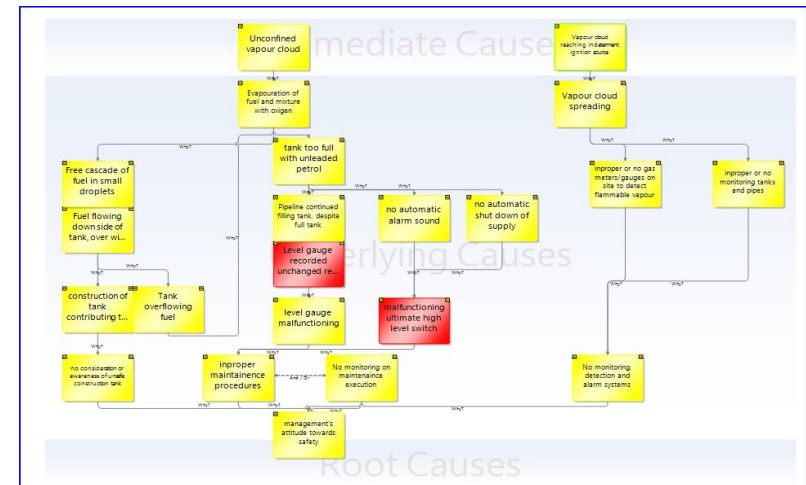
Investigator 3

“Prevention by Investigation”

- § High end Investigation tool
- § Powerful visual interface
- § Based on the TOPSET® Methodology
- § TOP-SET® is adopted by many Global Fortune 500 companies.
- § Unified and clear reporting functionality
- § Full Tripod Beta support
- § Full Root Cause Analysis support
- § Storyboard, photo attachments and full report

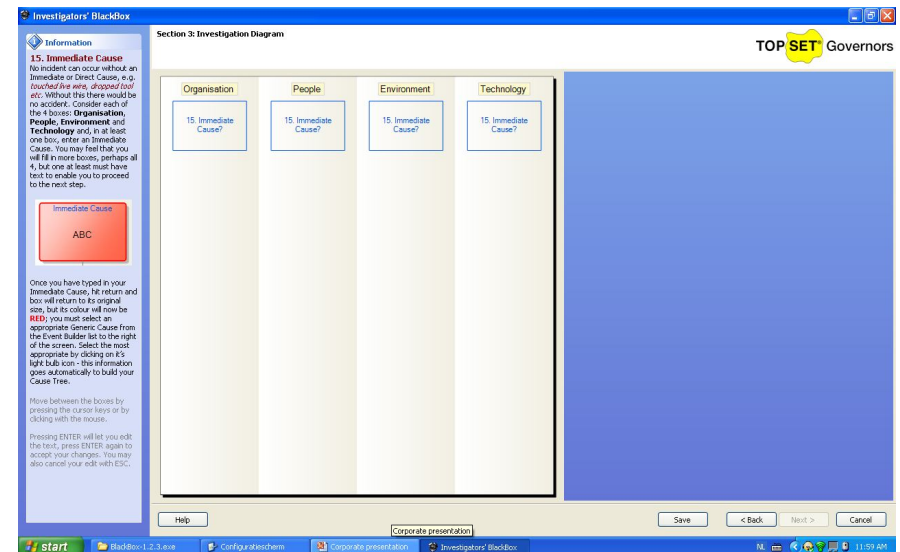
See

<http://www.bowtiexp.com.au/inv3.library.asp>



BlackBox

- § Easy to use investigation tool (you don't have to be an investigator)
- § Investigation reporting in less than hour
- § Unified reporting of incidents
- § Root Cause tree

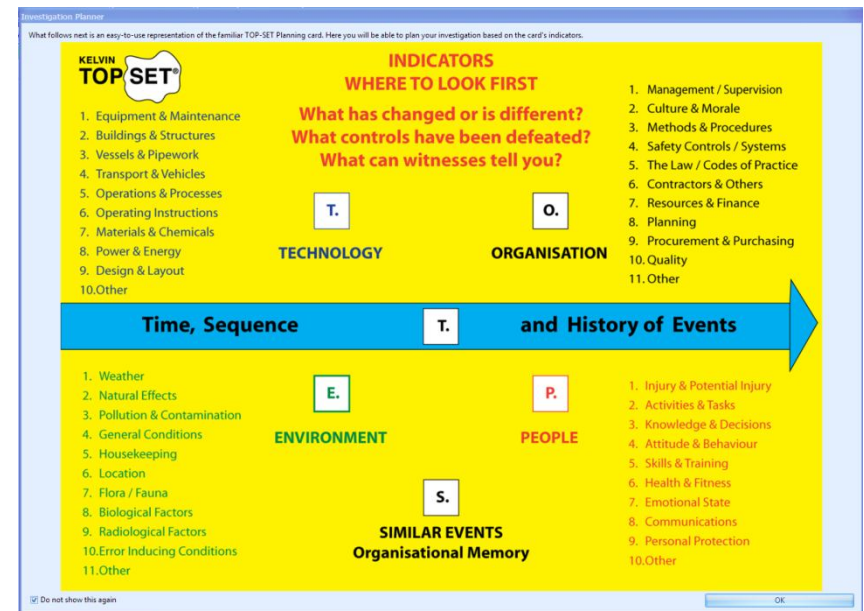


See

<http://www.bowtiexp.com.au/inv3.library.asp>

TOP-SET®

- § Scottish company with 22 years of incident investigation experience
- § TOP-SET® is an incident investigation methodology
- § Both incident investigation and analysis components
- § Uncovers more relevant facts, structures your investigation, creates more useful input for analysis
- § Learn the right lessons from an incident so as to prevent similar events from occurring in the future
- § TOPSET® is used as the standard methodology in many companies on the 'Global Fortune 500 list'



PermitVision

- § Comprehensive and flexible electronic Permit to Work
- § Fully Integrated Safe System of Work (ISSOW)
- § State of the art software architecture
- § Isolations management
- § Task risk assessments
- § Graphical overviews



See

<http://www.bowtiexp.com.au/eVision.library.asp>

ShiftVision

- § Operator logbook
- § Streamlining shift changeover
- § Easy and fast creation of handovers and reports
- § Future planning possible via event calendar
- § Multiple reporting options



The screenshot displays a grid of eight reporting options, each with an icon and a brief description:

- Logbook**: In the logbook we can write events and we can get a clear overview of the situation on the platform.
- Day Report**: Here we can generate day reports for each location, logbook and day. The report contains events from a logbook ordered by classification.
- Handover**: Here we can generate handover reports. The report contains events from a previous handover report and a logbook or a day report ordered by classification.
- Week Report**: Here we can generate week reports for each location, logbook and week. The report contains events from a day report in the selected ordered by classification.
- Tasks**: In the task module we can schedule tasks. The task will be written as event in the logbook at the scheduled date and time.
- General Report**: Here we can generate general reports. The report contains events from a logbook or a day report ordered by classification.
- Search**: Here we can search for events in all the logbooks.
- Company Report**: Here we can generate company reports. These are combined reports from several individual reports.

See

<http://www.bowtiexp.com.au/eVision.library.asp>

Viewport

- § Interrogate management systems and procedures,
- § Search asset and safety case documentation.
- § Crosses boundaries between departments - aggregates all types of drawings, documents and data in a single, accessible environment
- § Sophisticated algorithms to register and tag information for easy retrieval

Viewport – Principles

The screenshot shows a navigation menu with tabs for RPS, Viewport, Demo, and Questions / Wrap Up. The 'Viewport' tab is selected. Below the menu is a sidebar with a list of topics: Challenges Today, Principles >, Solutions, Architecture, Document Lifecycle, Maturity Model, Benefits, and Features. The main content area is titled 'Eliminate – Simplify – Standardize – Automate' and contains a list of principles:

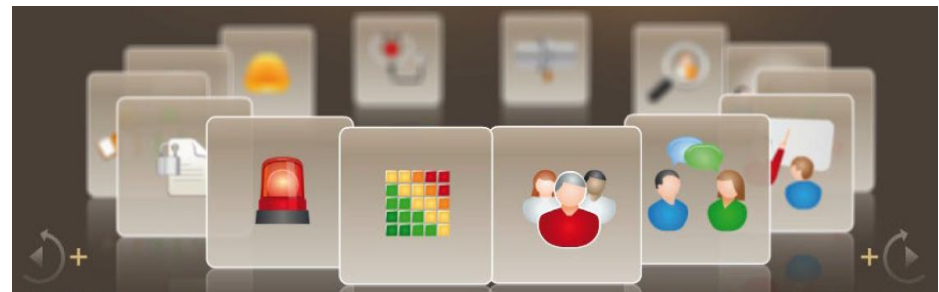
- Search for information
 - intuitive look and feel
 - facilitate storage and retrieval (a.k.a. the Maarten Vrolijk story)
- Consistency checks
- Single source documents, multiple views
 - EER / operator / project
- Make changes to IT application landscape unobtrusive
 - Should not affect end users' view location
- Support continuous improvement

See

<http://www.bowtiexp.com.au/viewport.library.asp>

GUI Management System Interface

- § Graphical User Interface (GUI) to house and display your Company Management System and other supporting documents
- § make documents accessible to your employees whilst maintaining document control and integrity
- § a user-friendly access to your management systems
- § Easy storage and retrieval is a feature of this product
- § Sophisticated algorithms to register and tag information for easy retrieval



Further enquiries

RPS – Software and Training

§ bowtiexp@bowtiexp.com.au

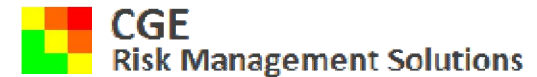
§ hserm@rpsgroup.com.au

§ <http://www.bowtiexp.com.au>

Full HSE & RM Capability Statement:

<http://bowtiexp.com.au/bowtiexp/library/HSERM-Capability-Statement.pdf>

RPS are official resellers for



Governors and eVision Industry Software are represented by CGE Risk Management Solutions.
Phone: +31 (0) 88 1001 350
Mobile: +31 (0) 6 214 071 70
Vlietweg 15 | 2266 KA LEIDSCHENDAM
The Netherlands

RPS – HSE and Risk Management Team

* Perth

Level 3, 38 Station Street
Subiaco, Western Australia 6008
P: +61 8 9211 1111
F: +61 8 9211 1122

* Brisbane

743 Ann St
Fortitude Valley, QLD 4006
P: +61 7 3237 8899
F: +61 7 3237 8833

Singapore

Kuala Lumpur

* Software sales offices

Email: hserm@rpsgroup.com.au

Web: www.rpsgroup.com.au