
RPS

**HSE and Risk Management
BowTieXP – New features in v. 5.0**

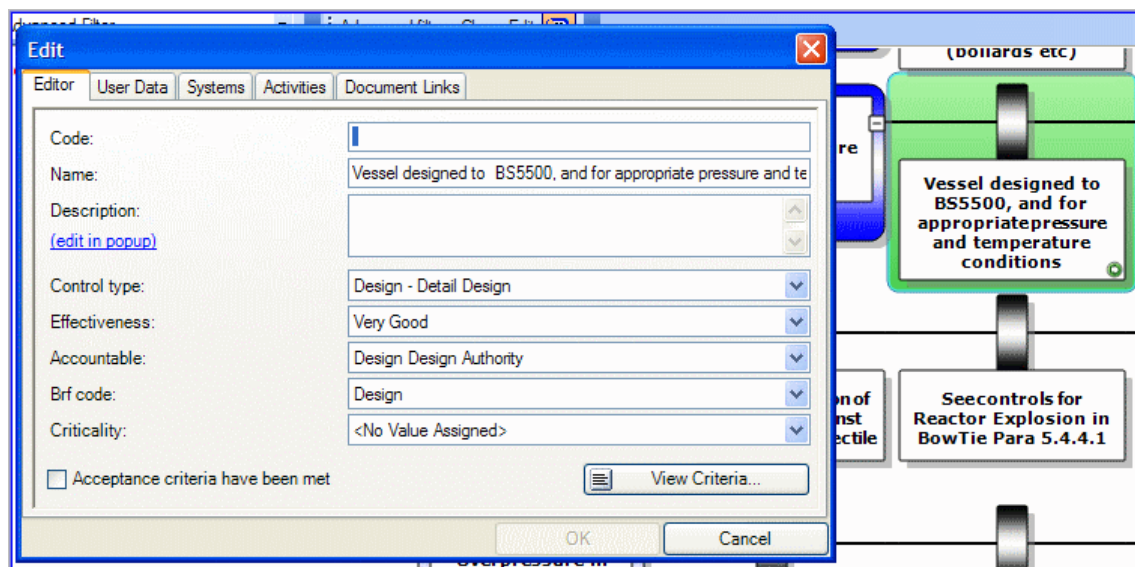


BOWTIEXP VERSION 5.0 ENHANCEMENTS

'Easier and Quicker' is the theme for this release. Here are some of the enhancements released in September 2011. See www.bowtiexp.com.au to download the update.

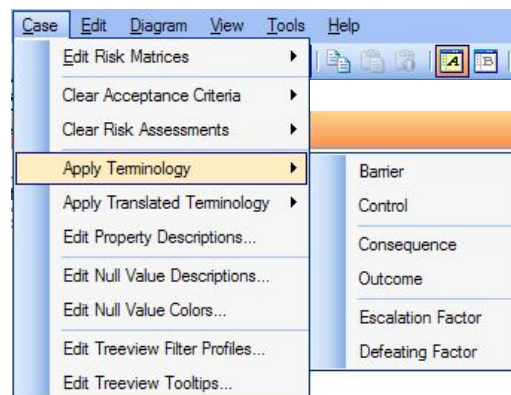
DIAGRAM BUILDING AND EDITING

1. Drag anything off the Treeview onto a control, etc. (e.g. job titles, effectiveness, category). It's quick and also complements the current paintbrush feature (Paste Special).
2. F2 or double click a control to open a pop-up editor, not far from your selected element. Much quicker to use and doesn't expand the Treeview. Adding Activities (etc.) is now accessible from the editor, instead of the old "Add Links command. The last-accessed tab is remembered.

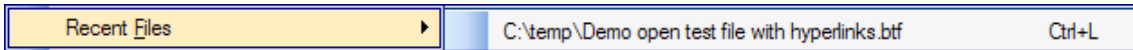


3. As seen above, you can add Systems, Activities or Docs from tabs on this popup. Saves clicking.
4. **N.B.** New standard terminology: "BARRIER" instead of "Control".

Apparently by popular request, the software uses the term "Barrier" by default. The Advanced Edition has always allowed customisation of terminology, but to accommodate BowTieXP Standard Edition users, there is a simple renaming option in the Case menu, as pictured, with other popular label swaps.



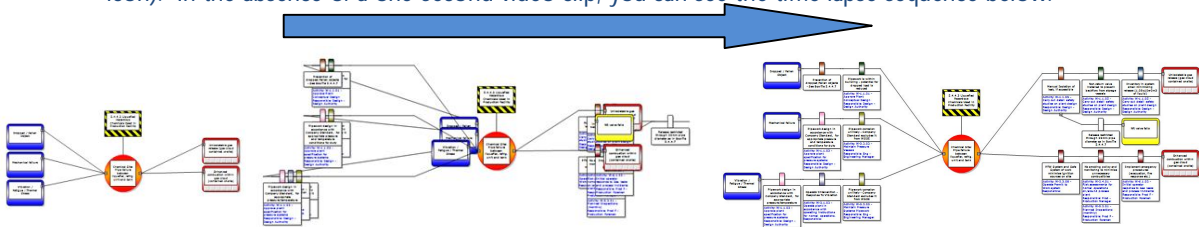
- A new shortcut, CTL-L opens the last saved file.



- The scrap book (was released in v 4.2 for Advanced Edition) now supports hierarchical sets of linkable items like activities. It also has a context menu which allows you view all fields on an item. If you haven't yet explored the capabilities of the scrap book, we recommend you do. See the document on v. 4.2 features

DIAGRAM DISPLAY

- As seen above, green shaded element when in focus. It is much easier to locate the element in focus.
- Animated opening of the diagram when expanding... it grows outwards like a fast motion movie of a flower opening, showing the added elements... (which you can also turn off by the movie camera icon). In the absence of a one-second video clip, you can see the time lapse sequence below:



- New Zoom levels of 50% and 75% added. This is great for workshops.



- Advanced multi-criterion diagram filtering (boolean type with 'and/or' functions). This is in the Advanced edition, and useful if you want to (say) show barriers that include the word "fire" and are assigned to the emergency response manager. Of course the existing The Reference Filter is still useful.

Edit Advanced Filter

Mode: AND OR

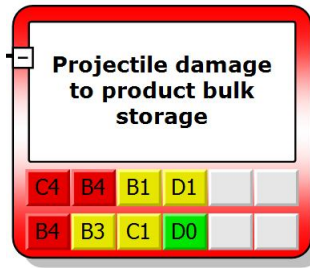
X	Consequence	[Text]	?	combust
X	Control	Accountable	?	manager

Buttons: + Add row, X Clear All, Cancel, OK

Diagram elements:

- PTW System and Safe System of work minimise ignition sources on site (Prod F, W-2.3.08)
- No smoking policy and monitoring to minimise unnecessary combustibles (Sec, W-2.4.01 (Prod), W-5.2.01 (Prod F))
- Sources of fire or ignition kept to a minimum in building (Sec, W-2.4.01 (Prod))
- Activate Emergency Response plan (GM, W-6.1.03 (Prod))
- Enhanced combustion within gas cloud (contained onsite) (C2, D1)

- Optional display of Inherent AND residual RA at once. This was only possible in reports until now.



- The inbuilt Test File has more sample diagrams, more examples of features and display profiles (Adv. Edition)

DIAGRAM LINKING

- Linking or chaining of Bowtie Diagrams (i.e. 'this threat or consequence to a different Top Event, which can then be opened).

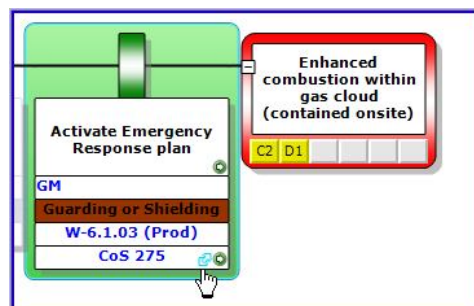
On threats and consequences, a drop down called equivalent top event has been added. This equates the item to another top event, allowing you to link multiple bow-ties together. For easy navigation, enable the equivalent top event in the extra info.

In addition, right click on Threat, Consequence or Top Event show new context menu entry called "go to related". This allows quicker navigation to any associated (linked) items you have set, which appears in the Listview.

The screenshot shows the "Edit" window for a bowtie diagram titled "Enhanced combustion within gas cloud (contained onsite)". The window has tabs for "Editor", "User Data", "Operations", and "Document Links". The "General" tab is active, showing fields for Name, Description, Category, and Equivalent Top Event. A list of equivalent top events is visible, including "5.4.4.2 Liquefied Hazardous Chemicals Used in Production F". A context menu is open over the bowtie diagram, showing options: "Mark for Move" (Ctrl+N), "Move" (Ctrl+M), "Mark for Compare", "Show usage references" (Ctrl+B), and "Draw Relationship Model".

- Click on a control document to open up a hyperlinked document window

See when a doc is hyperlinked, mouse-over displays a clickable button to open the doc. The other "Go To" green spots will open up the item in the treewiew.



REPORTS

15. Printing from the File menu is temporarily disabled, as PDFs were not working. This needs time to fix... but you can still print and PDF the most popular way by using CTL-SHIFT-C on the diagram., and then paste to your document or ppt. There are two new icons to help – one copies the diagram to the clipboard, and the other saves the diagram as a graphic file.



16. Aggregated risk assessment reports (e.g. a report below shows 5 Consequences are assessed as B3 in the Environment risk matrix.)

		A	B	C	D	E
Environment Inherent		Never Heard of Incident in Industry	Incident has Occurred in Industry	Incident has Occurred in Our Company	Happens Several Times per Year in Our Company	Happens Several Times per Year in Location
0	No Effect					
1	Slight Effect		[1]			
2	Minor Effect					
3	Localised Effect		[5]			
4	Major Effect					
5	Massive Effect					

		A	B	C	D	E
Environment Residual		Never Heard of Incident in Industry	Incident has Occurred in Industry	Incident has Occurred in Our Company	Happens Several Times per Year in Our Company	Happens Several Times per Year in Location
0	No Effect					
1	Slight Effect			1		
2	Minor Effect					
3	Localised Effect					
4	Major Effect					
5	Massive Effect					

17. Colouring of some fields in some reports, and other enhancements.

Research compliance Research compliance with protocol	
<i>Description</i>	
<i>Target</i>	16/06/2011
<i>Priority</i>	High
<i>Action party</i>	TM Training Manager
<i>Completed</i>	Yes
<i>External Reference</i>	
<i>Sign off date</i>	
<i>Sign off authorized by</i>	
<i>Sign off comment</i>	
<i>Path: (LOC.) Highway</i>	
<i>(HAZ.) H01 Driving a car / Losing control over the car</i>	
<i>(THT.) Driver loss of attention (due to phone, controlling radio, fatigue, eating etc.)</i>	
<i>(BR.) Limit mobile phone use in car</i>	
<i>(ACTN.) Research compliance Research compliance with protocol</i>	

18. An all-Color Legend report (but changed to two columns for this newsletter).

The legend is organized into the following categories:

- Barrier Types:** Includes items like '<NULL> <No Value Assigned>', 'Guarding or Shielding', 'Separation (Time or Space)', 'Reduction in Inventory', 'Control of Energy Release', 'Administrative', 'Procedural', 'Maintenance', 'Inspection', 'Safety', 'Operations and Maintenance', 'Inspection and Maintenance', 'Design - Process concept', 'Design and Maintenance', 'Training and Competence', 'Project Construction Management', 'Design - Protection System', and 'Design - Detail Design'.
- Consequence Categories:** Includes '<NULL> <No Value Assigned>', 'EXT External Damage', and 'INJ Injury'.
- Criticalities:** Includes '<NULL> <No Value Assigned>', 'High High Criticality', and 'Med Medium Criticality'.
- Effectivenesses:** Includes '<NULL> <No Value Assigned>', '-- Very Poor', '- Poor', '+ Good', '++ Very Good', 'N/A NOT Applicable', and '3P Third Party'.
- Frequencies:** Includes '<NULL> <No Value Assigned>', 'Y Yearly', '6M 6 Monthly', '3M 3 Monthly', 'M Monthly', 'W Weekly', 'D Daily', 'RQ As required', 'CT Continuous', and 'SH Shift'.
- Priorities:** Includes '<No Value Assigned>', 'High', 'Med', and 'Low'.
- BRF Codes:** Includes '<NULL> <No Value Assigned>', 'HW Hardware', 'DE Design', 'MM Maintenance Management', 'PR Operating Procedures', 'EC Error-Enforcing Conditions', 'HK Housekeeping', 'IG Incompatible Goals', 'OR Organisational Factors', 'CO Communications', 'TR Training', and 'DF Defences'.

19. Five new Quality Checks and grouping within the list:

The 'Quality Checks' window displays the following list of items:

- No report
- Actions without Action party
- Activities where 'Responsible' has not been set
- Activities without associated Document Links
- All Actions
- All Uncompleted Actions
- Barriers where 'Acceptance criteria have been met' is false
- Barriers where 'Accountable' has not been set
- Barriers without Activities
- Barriers without associated Document Links
- Barriers without Barrier type
- Barriers without Effectiveness
- Barriers without Systems
- Consequences where 'Acceptance criteria have been met' is false
- Consequences without Barriers
- Consequences without Category
- Escalation Factors where 'Acceptance criteria have been met' is false
- Escalation Factors without Barriers
- Hazards where 'Accountable' has not been set
- Threats where 'Acceptance criteria have been met' is false
- Threats without Barriers
- Threats without Category

At the bottom of the window, there are three buttons: 'Text Find', 'Quality Checks', and 'Color Legend'.

NEW MODULES

20. Plus a brand new concept in an add-on module for incident analysis.

21. REMINDER

- Work BowTies in the web-based system for JSAs / JHAs using BowTies.
- With the purchase and installation of the Web Viewer module, your BowTies can now be manipulated and viewed across the web
- BowTieXP software has not had a price increase in five years. We don't know how long this will last, but clearly it is now better value than ever.

Nearly all of these features are incorporated into the Standard Edition.

Please contact us as below with further queries on BowTieXP.

Other informative documents in this series:

The following are available upon request (also see the Library pages at www.bowtiexp.com.au)

For those considering BowTieXP:

- BowTieXP Risk Management made easy PPT
- BowTieXP FAQ
- BowTieXP Quick Start Manual
- BowTieXP Black Module (incident analysis)
- BowTieXP Summary of Advanced Features

For the BowTieXP user:

- BowTieXP Major New Features – Version 4
- BowTieXP-Manual

Incident Investigation:

- Guide to using Investigator's Black Box
- How To Access Host ID- IBB

CONTACT US

Please direct all global enquiries to RPS at the following office:



RPS Energy Pty Ltd, HSE and Risk Management
38 Station Street, Subiaco 6008, Western Australia
PO Box 465, Subiaco 6904, Western Australia
T +61 8 9211 1111 F +61 8 9211 1122
E bowtiexp@bowtiexp.com.au
W www.bowtiexp.com.au

RPS Energy is a member of the RPS Group:
www.rpsgroup.com.au
www.rpsgroup.com

RPS are authorised resellers and Official
Training Solutions providers for



Leidschendam, The Netherlands +31 (0) 88 1001 350
E support@bowtiexp.com W www.cgerisk.com

Copyright reserved, RPS Group 2011. BowTieXP, TOPSET, i3 and other trademarks used by permission.
